



HTV-0200S Air cooled furnace camera

Process monitoring in hot zone area



PRODUCT FEATURES



- Stationary
- Diameter: 200 mm
- Best isolation ceramic construction with higher energy efficiency
- Cooling by medium pressure fan with ambient air
- Redundant cooling with eddy current compressed air cooler
- Fiber reinforced ceramic jacket

The HTV- 0200S is designed for the permanent observation of processes with temperature up to 1300°C. This is designed for high energy efficient without water cooling system. The ceramic oxide has a very high resistance to corrosive atmosphere which can be occurred during exhaust gas flow. The main field of application of this instrument is to observe and to monitor hot treatment processes in the furnace systems which are directly heated

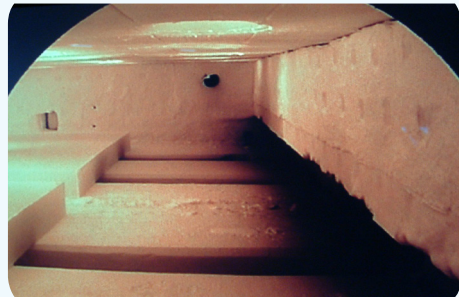
or occurred by burners.

PRODUCT HIGHLIGHTS

- Stationary system
- Very large dynamic range of the camera 102 dB
- Pinhole lens with 68° FOV (diagonal)
- No smear and blooming in the picture
- Very small opening for the optics to minimize the risk of the mechanical damage
- Exclusive cooling with air

APPLICATIONS

- Observation of hot zone area under aggressive atmospheric conditions
- Regular and continuous detection of failure inside combustion chambers
- Timely detection of disturbances in the combustion chamber
- Automatic image analysis for plant optimization
- Suitable for temperature up to 1300°C



>combustion chamber

Observation of steel slabs inside the reheat furnace (photo left) and the exit of the steel beam reheat furnace (photo on the right).

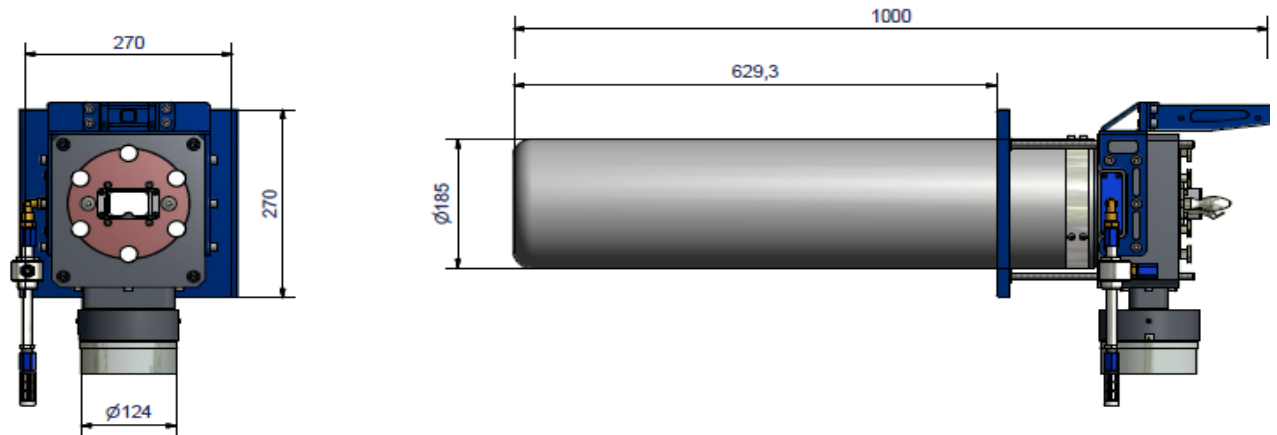


HTV-0200S

Air cooled furnace camera

Process monitoring in hot zone area

MEASUREMENTS



> SPECIFICATION

VIDEOSCOPE

Dimensions of HTE-0200S-630	L = 629.3 mm , GL = 1000 mm
Isolation material	Ceramic
Purging Air	30 - 60 nm3/h Class I according to ISO 8573-1:2010, Temperature < 30° C
Temperature range	300° C - 1300° C
Max. ambient temperature	50° C
Int. Temperature sensor signal	PT100 Signal
Camera	CVBS: 1 Vpp 75 Ohm Interlace unbalanced
Weight	Approx. 18 kg

ELECTRICAL SPECIFICATIONS

Electrical power supply	12 V DC 20 W
-------------------------	--------------

© 2017 OptoPrecision GmbH. All rights reserved. Stand: July 2017

Changes of this product sheet are reserved

OptoPrecision GmbH | Auf der Hoehe 15 | 28357 Bremen | Germany
 Telefon: +49 421 94961-79 | Fax: +49 421 94961-99 | E-Mail: sales@optoprecision.de