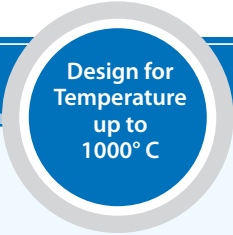




# HTV-058S Air cooled furnace camera

Process monitoring in hot zone area



## PRODUCT FEATURES



- Stationary
- Diameter : 58 mm
- Cooling with compressed air
- Insulation with ceramic material
- Different Field of View and Direction of view

HTE-058S is most compatible, stationary and air cooled camera for continuous monitoring of furnace system in high temperature. The excellent insulation of the probe with new state of art materials give protection for internal optical components against heat. The permanent airflow through system ensures dust free environment to avoid any damage to exit lens system. Depending on design, the front system of the camera can withstand up

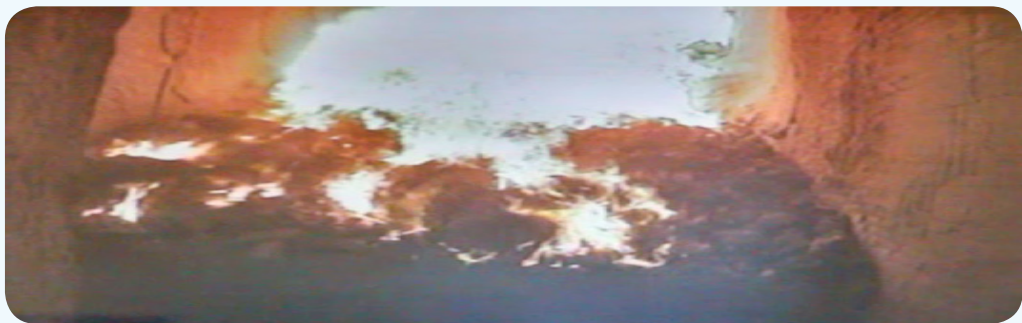
to 1000° C. The small volume of purging air is sufficient for cooling of the camera system which is provided by supply cabinet. If there is any failure in air supply system, a redundant compressed air cooling system is used. In addition to cooling effect, supply air also protects the front lens system from the dusty environment in the furnace system.

### PRODUCT HIGHLIGHTS

- Stationary system
- Various length from 350 mm to 500 mm
- Analog or HD- SDI or GigaE high definition video camera systems
- Insulation with high end ceramic materials
- Operation with only compressed air

### APPLICATIONS

- Observation of furnace system especially waster incinerator and sintering plants
- Continuous monitotring of burners for better resource optimization
- Suitable for temperature up to 1000°C



> **Combustion chamber**  
Insight into combustion chamber of waste incinerator plant

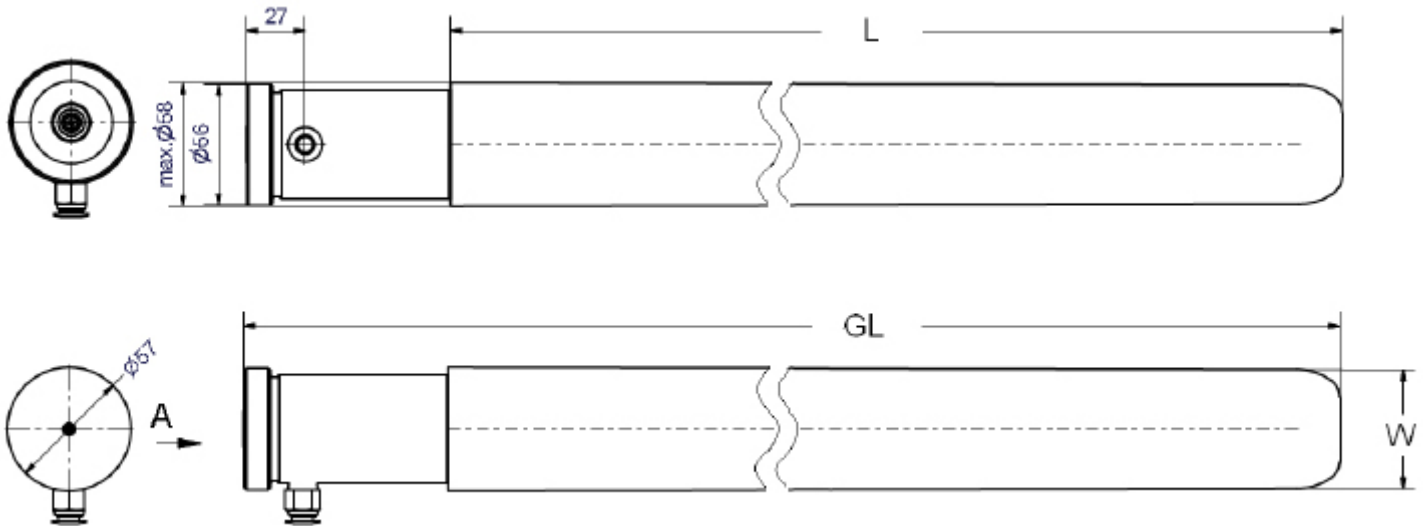


# HTV-058S

## Air cooled furnace camera

Process monitoring in hot zone area

### MEASUREMENTS



### > SPECIFICATION

#### VIDEOSCOPE

Dimensions of HTV-058S-500	L = 551 mm ,GL = 645.5 mm , W = 0.2°
Dimensions of HTV-058S-350	L = 353.5 mm ,GL = 447.5 mm ,W=0.3°
Isolation material	Keramik
Compressed air	2-3 bar; 10-20 Nm <sup>3</sup> /h
Temperature	400° C - 1000° C
Temperature sensor signal	PT100 Signal over 4...20mA converter (0-150° C)
Camera	Pinhole miniature camera
Video signal	Analog, PAL
Field of view	horizontal: approx. 68°      vertical approx. 53°

#### ELECTRICAL SPECIFICATIONS

Electrical power supply	230 V AC
-------------------------	----------

© 2017 OptoPrecision GmbH. All rights are reserved. Stand: July 2017

This datasheet is subjected to be changed without prior notice.

OptoPrecision GmbH | Auf der Höhe 15 | 28357 Bremen | Germany  
 Telefon: +49 421 94961-79 | Fax: +49 421 94961-99 | E-Mail: sales@optoprecision.de