



HTE-038P Portable endoscope/videoscope camera

Process monitoring in hot zone area

Design for
Temperature
up to
2000° C

PRODUCT FEATURES



- Portable endoscope or videoscope camera system
- Diameter: 38 mm
- Both air and water cooled
- Can be used as portable or stationary system
- Different Field of View and Direction of View

HTE-038P endoscope is exclusively designed for extremely high furnace temperature typically in the range of 1200° C - 2000° C. Observation of such furnace systems become more difficult due to high temperature and high intensity of light. HTE-038P is most suitable instrument for such harsh environment due to effective air and water cooling system. Due to small diameter and light in weight, it becomes easy for handling. It can be used as

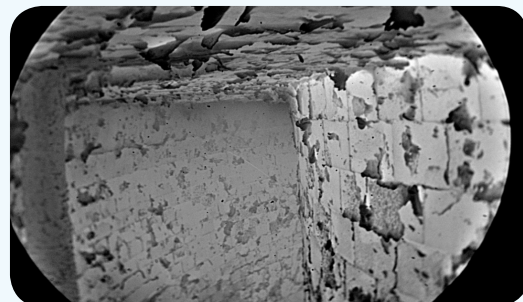
portable as well as stationary system. Though it has eyepiece for direct observation of hot zone area with naked eye, it has also video or DSLR camera adapters for recording video or high quality images. It has a set of optical filters for intensity and iris adjustment to observe extremely high temperature furnace system with eyepiece.

PRODUCT HIGHLIGHTS

- Portable or stationary
- Length is 900 mm or 1200 mm
- Field of View (FOV) with 60° or 90°
- Various Direction of View (DOV) with 0°, 45°, 70°
- Illumination with fiber optic light system possible
- Video or DSLR camera adapters for video recording or high quality images

APPLICATIONS

- Observations of extremely high temperature furnace system
- Portable or stationary endoscopy/videoscopy applications
- Suitable for temperature up to 2000° C



> **Combustion chamber**

Insight into furnace system with two different pictures

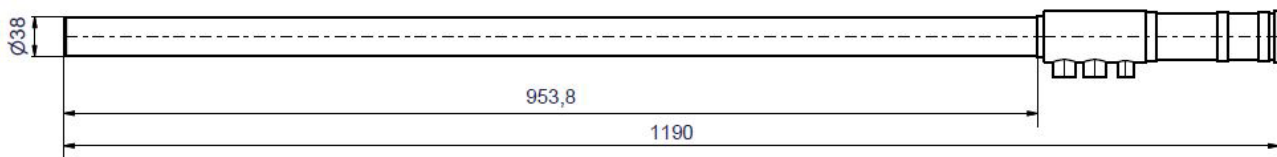


HTE-038P

Portable endoscope/videoscope camera

Process monitoring in hot zone area

MEASUREMENTS



> SPECIFICATION

ENDOSCOPE

Dimensions of HTE-038P-1200	L = 953.8 mm ,GL = 1190 mm
Isolation material	Stainless steel
Compressed Air	2-10 bar; 10-20 nm ³ /h, Temperature 20° C to 35° C
Cooling Water	Inlet pressure 3-6 bar; 15-18 l/min, Temperature 20° C to 35° C
Temperature range	300° C - 2000° C
Adapters	C - mount for videocamera, T2 - ring for DSLR

VIDEOSCOPE

Camera	Pinhole miniature camera
Video signal	Analog, PAL

ELECTRICAL SPECIFICATIONS

Electrical power supply	220 V/110 V AC 50/60 Hz
-------------------------	-------------------------

© 2017 OptoPrecision GmbH. All rights are reserved. Stand: July 2017
 This datasheet is subjected to be changed without prior notice.

OptoPrecision GmbH | Auf der Höhe 15 | 28357 Bremen | Germany
 Telefon: +49 421 94961-79 | Fax: +49 421 94961-99 | E-Mail: sales@optoprecision.de